

INSTALLING POWERDRAW ~ AND USING & PROGRAMMING IT

December 27, 2013

Available at:-

www.powerdraw.software.informer.com

Misc web pages:-

<http://fringa.blogspot.com/2011/11/powerdraw-review-date-april-20-2006.html>

Installs to:-

Tekhnelogos \PowerDraw V29\PowerDraw

Publisher's description:-

PowerDraw is a free drawing application which you can easily draw any type of drawing. PowerDraw is designed in between CAD and Desktop Publishing style so you can use the ease of DTP with the power of cad core.

Using mouse actions or control methods to handle drawings.

Drawing line, polyline, rectangle, polygon, bezier, circle, ellipse, arc, pie, chord and text on the Designer Canvas.

Modifying the drawn figures.

Using layers and layer operations like merging.

Using all colors possible.

Using different style of pens with different widths.

Using different style of brushes (including custom hatches) to paint figures.

Using gradient and texture fills to paint figures.

Creating text objects with any font installed in the system.

Saving the drawing as file and opening the file as drawing.

Printing the file to the printer and/or plotter.

Making unlimited Undo?s and Redo?s.

Cutting, copying, pasting and deleting the figures.

Grouping and ungrouping the figures.

Combining, welding, breaking figures.

Ordering the figures (SendToBack, BringToFront, etc.)

Rotating, scaling and mirroring the figures.

Making polar and rectangular figure arrays.

Aligning the figures in any style.

Inserting bitmaps or jpeg pictures to the drawing.

Scaling, rotating, mirroring,skewing and flipping bitmaps.

Inserting WMF/EMF files as editable objects.

Exporting the drawing as WMF file.

Using grids and guidelines.

Snapping the mouse actions to grids, guidelines or the current objects.

Using block libraries, inserting blocks.

Using page formats like (A4,letter, etc.) or custom sizes.

Zooming and panning, viewing the drawing in any scale.

[Making macros in pascal-like language and running them in the designer.](#)

Using plugins developed as DLL in a special structure(documented).

Available at:- <http://download.sharewarecentral.com/84/435766/powerdraw.html>

PowerDraw 3.0 Description

PowerDraw is a free drawing application which you can easily draw any type of drawing. PowerDraw is designed in between CAD and Desktop Publishing style so you can use the ease of DTP with the power of cad core.

PowerDraw is a free drawing application which you can easily draw any type of drawing. PowerDraw is designed in between CAD and Desktop Publishing style so you can use the ease of DTP with the power of cad core. Using mouse actions or control methods to handle drawings. Drawing line, polyline, rectangle, polygon, bezier, circle, ellipse, arc, pie, chord and text on the Designer Canvas. Modifying the drawn figures. Using layers and layer operations like merging. Using all colors possible. Using different style of pens with different widths. Using different style of brushes (including custom hatches) to paint figures. Using gradient and texture fills to paint figures. Creating text objects with any font installed in the system. Saving the drawing as file and opening the file as drawing. Printing the file to the printer and/or plotter. Making unlimited UndoOCOs and RedoOCOs. Cutting, copying, pasting and deleting the figures. Grouping and ungrouping the figures. Combining, welding, breaking figures. Ordering the figures (SendToBack, BringToFront, etc.) Rotating, scaling and mirroring the figures. Making polar and rectangular figure arrays. Aligning the figures in any style. Inserting bitmaps or jpeg pictures to the drawing. Scaling, rotating, mirroring,skewing and flipping bitmaps. Inserting WMF/EMF files as editable objects. Exporting the drawing as WMF file. Using grids and guidelines. Snapping the mouse actions to grids, guidelines or the current objects. Using block librarries, inserting blocks. Using page formats like (A4,letter, etc.) or custom sizes. Zooming and panning, viewing the drawing in any scale. Making macros in pascal-like language and running them in the designer. Using plugins developed as DLL in a special structure(documented).

OS: Win95, Win98, WinNT 4.x, WinXP, Windows 2000, Windows 2003

Published By:

[Tekhnelogos](#)

Downloads:

[2](#)

License Type:

[Freeware](#)

Size:

[7.3 MB](#)

Date Added:

[07 March, 2013](#)

COMMENTS:-

Powerdraw does have a macro capability, however, there seems to be no trigonometric function availability. This makes it impractical for automated sundial drawing unless one writes the appropriate functions.

TRIGONOMETRY:-

See Supplemental Shadows for the algorithms for SIN, COS, TAN, ATAN, and SQRT.

OPTIONAL NOTES:- Here are some useful ideas for a macro in Powerdraw, these are the notes made when trying to figure out how to write a useful sundial program. It should be noted that three bugs were quickly found in Powerdraw.

Powerdraw bug #1:

```
answer:= sin(a)/cos(a)
```

produces erroneous results, the work around is:-

```
d1:=(sin(45));      d2:=(cos(45));      answer:= d1/d2;
```

Powerdraw bug #2:

```
answer:= x/cos(a)
```

produces erroneous results, the work around is:-

```
y:=(cos(45));      answer:= x/y;
```

Powerdraw bug #3:

When a function such as tan() uses within it two other functions such as sin() and cos() that in inline code works, this does not work when within a function. The sin() and cos() cause erroneous results,

Powerdraw bug #4:

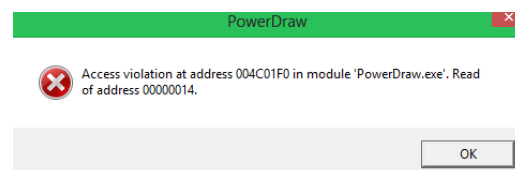
When a function declares a variable, such as dt1, and when the main program also declares a variable as the same name, then scope is not honored. Thus functions must take care when declaring internal variables.

CAUTION:

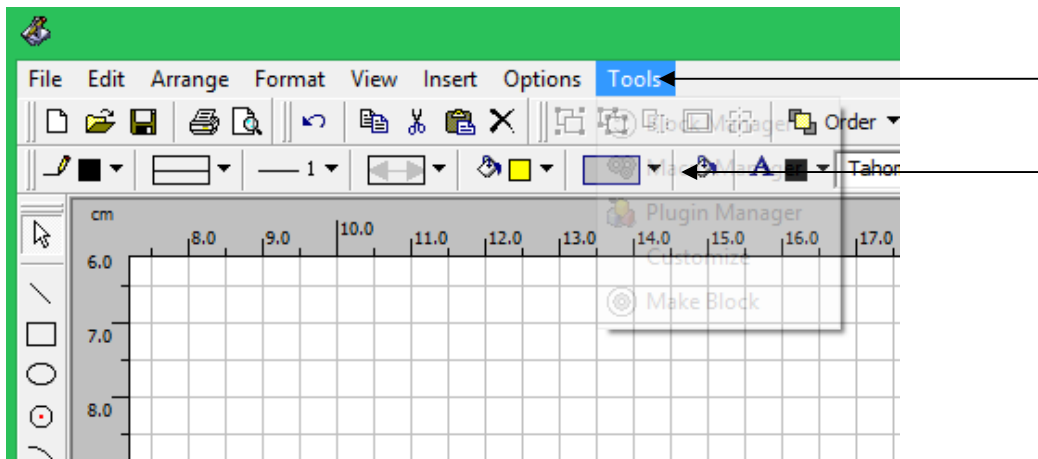
Powerdraw may save your macros in: USERS\name\APPDATA\..somewhere as opposed to the: Tekhnelogos \PowerDraw V29\PowerDraw\Macros\ folder. In other words, be careful when saving or updating or copying macro code over.

NOTE:

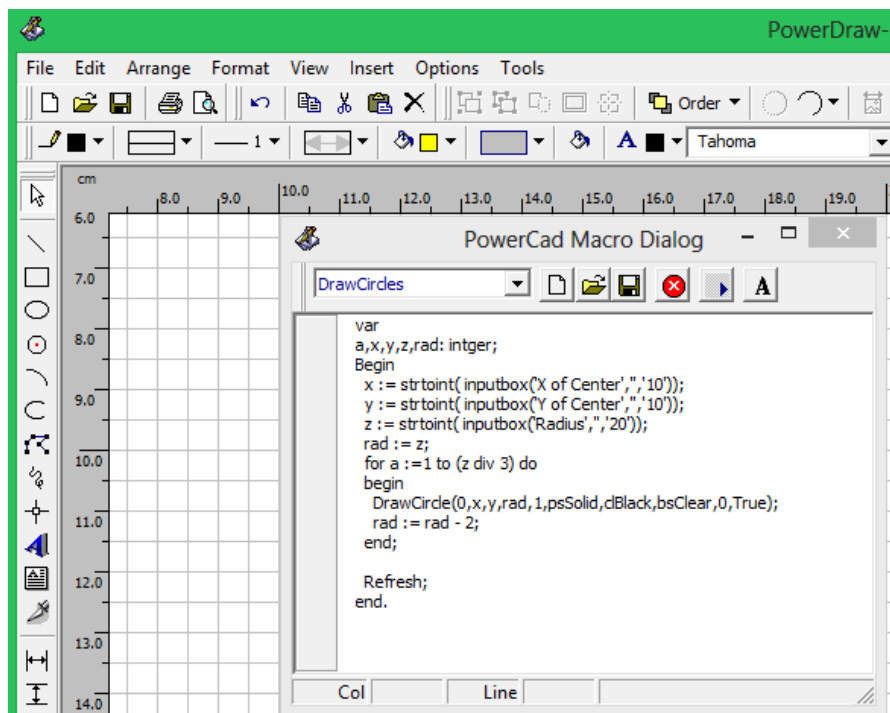
Powerdraw on Windows 8 has program exceptions, none of which seem to affect output however..



To load a macro



TOOLS
MACRO MANAGER
click the diskette logo to open the macro folder



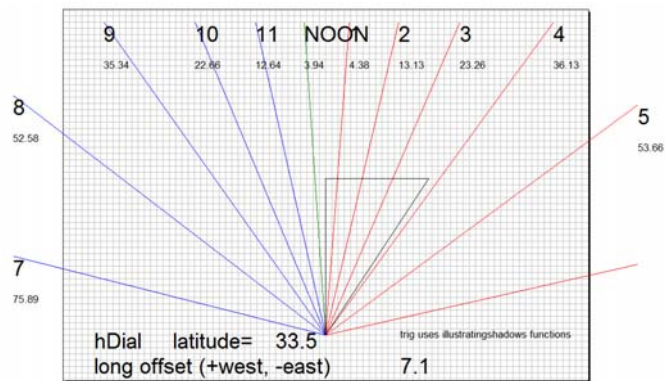
click the arrow logo to execute



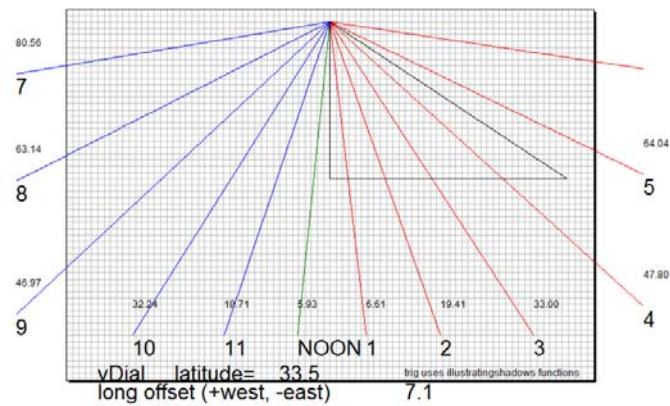
Macros are stored in: Tekhnologos \PowerDraw V29\PowerDraw\Macros\

But, **watch out**, as Powerdraw may save your macros in USERS\name\APPDATA\..somewhere

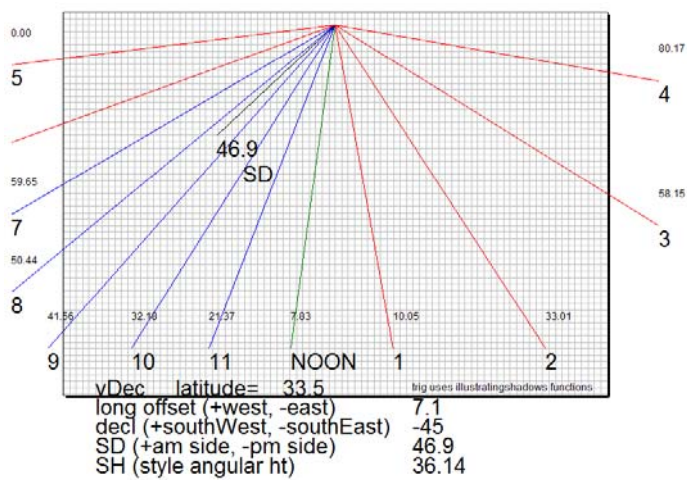
The final hDial program ~ ~ ~ **dialPD-hDial.cmf**



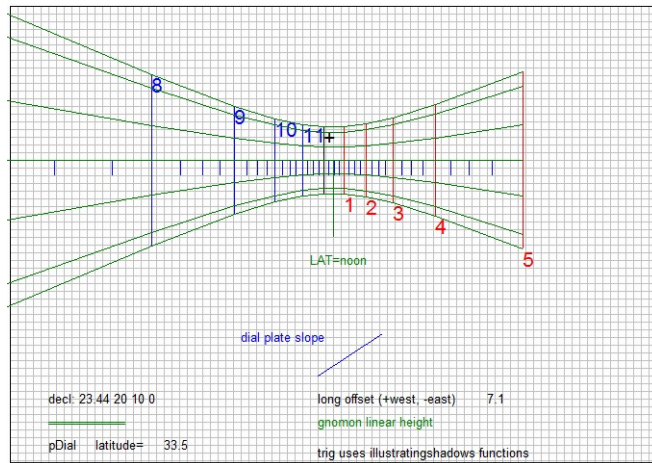
The final vDial program ~ ~ ~ **dialPD-vDial.cmf**



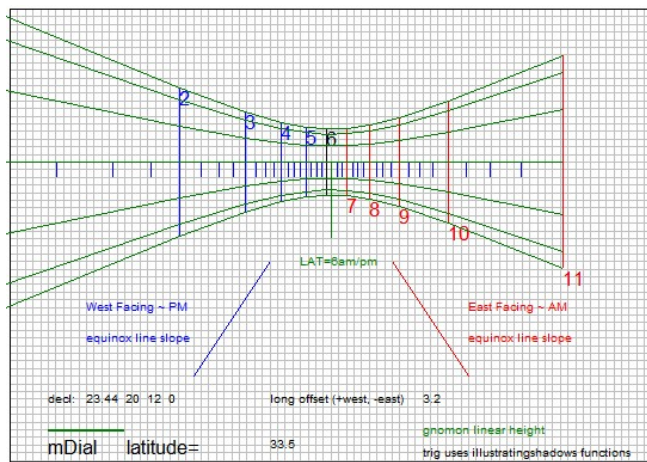
The final vDecl program ~ ~ ~ **dialPD-vDecl.cmf**



The final polar dial program ~ ~ ~ **dialPD-pDial.cmf**



The final meridian dial program ~ ~ ~ **dialPD-mDial.cmf**



The final meridian dial program ~ ~ ~ **dialPD-shCal.cmf**

